

A photograph of a playground. In the foreground, a red slide with a black metal track is angled downwards. The slide is set on a red rubber safety mat. In the background, there are blue and red climbing structures, including a spiral slide and a bridge-like walkway. A chain-link fence and trees are visible in the distance. A semi-transparent white banner is overlaid across the middle of the image, containing the text.

# the kids aren't alright

playgrounds in the bubble wrap generation





**7 hrs per day**

amount of time spent on screens

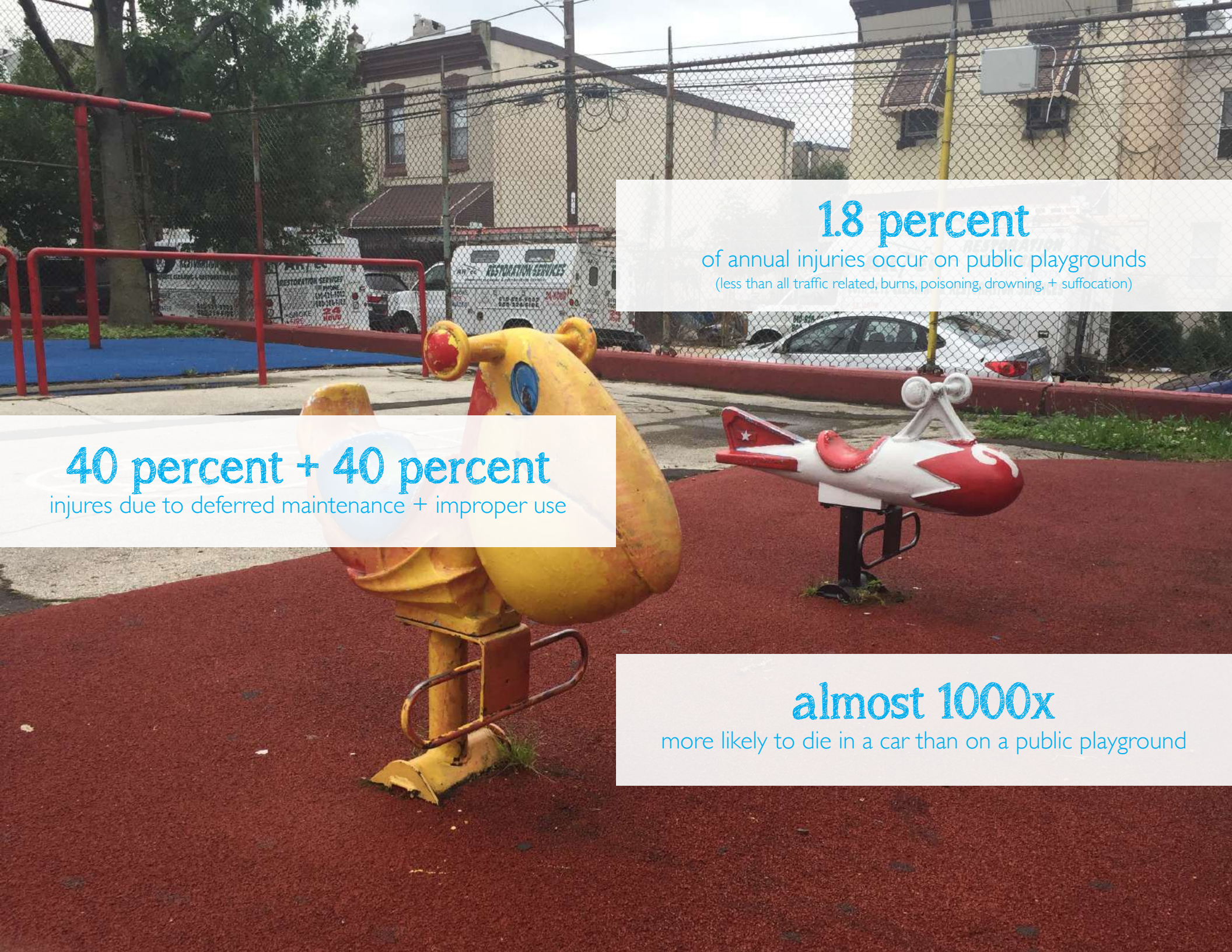
**One in three**

children overweight or obese

**30 percent**

of children and teens extremely stressed





**1.8 percent**

of annual injuries occur on public playgrounds  
(less than all traffic related, burns, poisoning, drowning, + suffocation)

**40 percent + 40 percent**

injures due to deferred maintenance + improper use

**almost 1000x**

more likely to die in a car than on a public playground





## our playgrounds are broken

homogenously safe + insidiously boring + unsustainably costly



challenge the existing playground model  
adding risk + adventure



london study of playgrounds  
6 months, 16 playgrounds, almost 15,000 people  
55% more visitors  
children + teens 16-18% more active  
14% more adults  
vs comparable US playgrounds



jubilee gardens playground







wellington barracks playground







pools playground







tumbling bay playground





abandon the existing playground model  
explore re-purposing + temporary + pop ups





sister cities park







the oval







spruce street harbor park



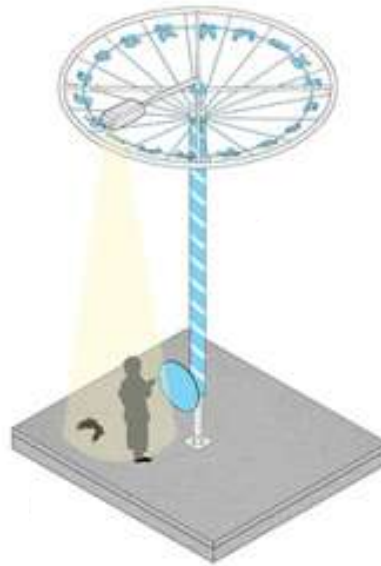
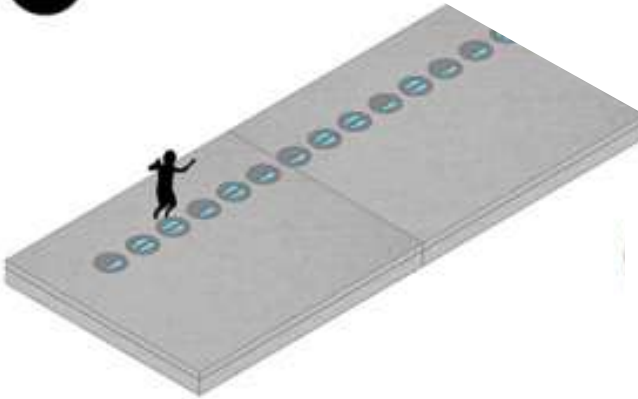


envisioning the city as playground  
embrace the play everywhere model



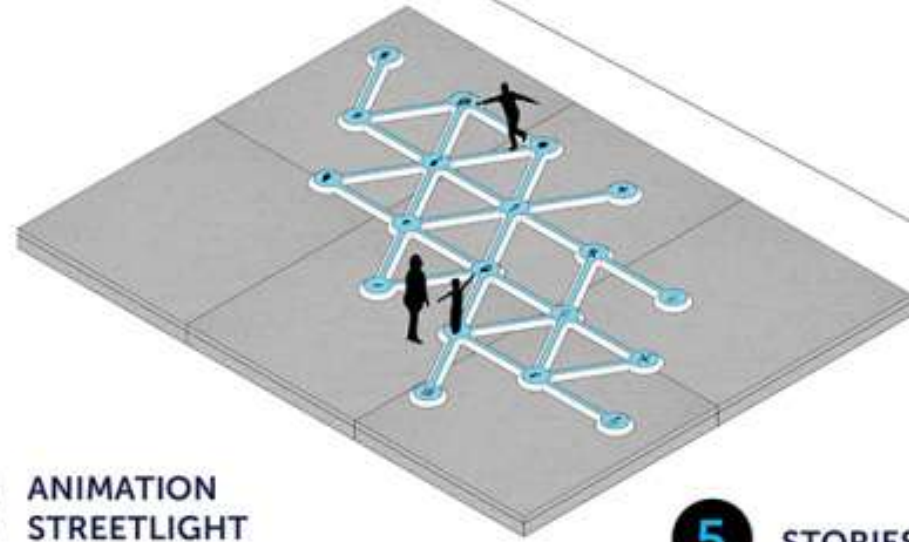
1

JUMPING FEET



2

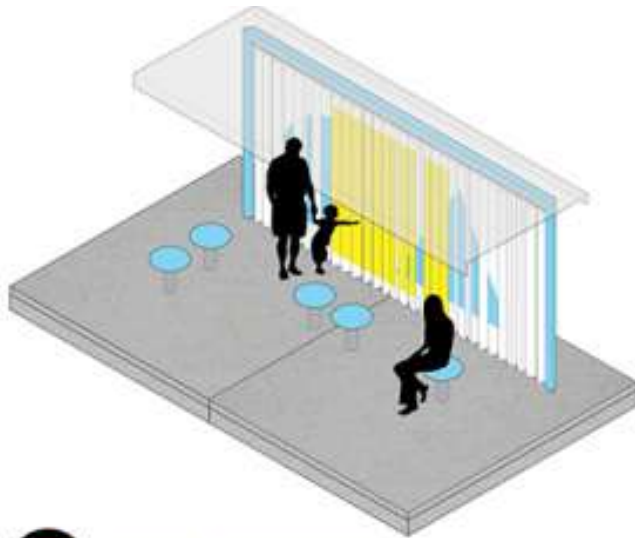
ANIMATION  
STREETLIGHT



5

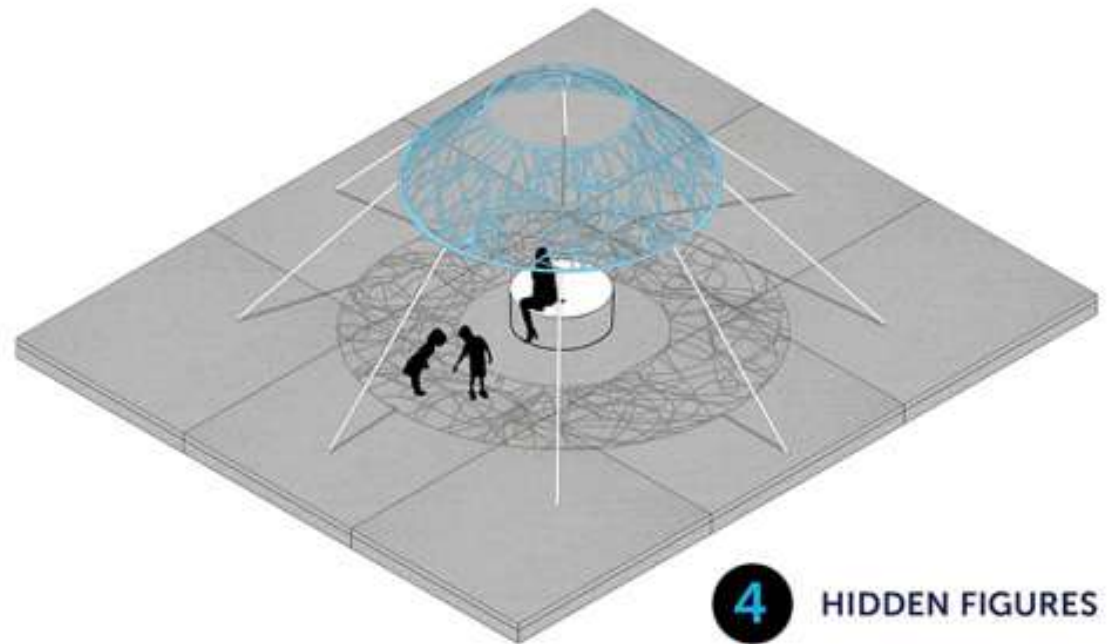
STORIES

## urban thinkscape



3

PUZZLE BENCH



4

HIDDEN FIGURES





playable sidewalk







playbraries





challenge perceptions of risk + safety  
by moving the conversation out of the playground,  
making cities more playful + fun for all

“we don’t stop playing because we grow old;  
we grow old because we stop playing”  
- george bernard shaw

references

<https://medlineplus.gov/ency/patientinstructions/000355.htm>

<https://stateofobesity.org/childhood/>

<http://www.apa.org/monitor/2014/04/teen-stress.asp>

[https://www.cdc.gov/safechild/child\\_injury\\_data.html](https://www.cdc.gov/safechild/child_injury_data.html)

[https://comptroller.nyc.gov/wp-content/uploads/documents/ClaimStat\\_Playground\\_February\\_2015.pdf](https://comptroller.nyc.gov/wp-content/uploads/documents/ClaimStat_Playground_February_2015.pdf)

<https://www.cdc.gov/homeandrecreationalafety/playground-injuries/playgroundinjuries-factsheet.htm>